


S.N.	DESCRIPTION	SYMBOLS (LEGEND)	BAY NO/LOCATION	UNIT	QTY
1.	2000V, 4000V, 6000V, 10KV, 17.5KV, 22KV, 33KV, 44KV, 66KV, 110KV, 132KV, 154KV, 175KV, 220KV, 252KV, 300KV, 330KV, 363KV, 400KV, 462KV, 517KV, 550KV, 600KV, 660KV, 726KV, 798KV, 88KV, 95KV, 105KV, 115KV, 125KV, 135KV, 145KV, 155KV, 165KV, 175KV, 185KV, 195KV, 205KV, 215KV, 225KV, 235KV, 245KV, 255KV, 265KV, 275KV, 285KV, 295KV, 305KV, 315KV, 325KV, 335KV, 345KV, 355KV, 365KV, 375KV, 385KV, 395KV, 405KV, 415KV, 425KV, 435KV, 445KV, 455KV, 465KV, 475KV, 485KV, 495KV, 505KV, 515KV, 525KV, 535KV, 545KV, 555KV, 565KV, 575KV, 585KV, 595KV, 605KV, 615KV, 625KV, 635KV, 645KV, 655KV, 665KV, 675KV, 685KV, 695KV, 705KV, 715KV, 725KV, 735KV, 745KV, 755KV, 765KV, 775KV, 785KV, 795KV, 805KV, 815KV, 825KV, 835KV, 845KV, 855KV, 865KV, 875KV, 885KV, 895KV, 905KV, 915KV, 925KV, 935KV, 945KV, 955KV, 965KV, 975KV, 985KV, 995KV, 1000KV				
2.	2000V, 4000V, 6000V, 10KV, 17.5KV, 22KV, 33KV, 44KV, 66KV, 110KV, 132KV, 154KV, 175KV, 220KV, 252KV, 300KV, 330KV, 363KV, 400KV, 462KV, 517KV, 550KV, 600KV, 660KV, 726KV, 798KV, 88KV, 95KV, 105KV, 115KV, 125KV, 135KV, 145KV, 155KV, 165KV, 175KV, 185KV, 195KV, 205KV, 215KV, 225KV, 235KV, 245KV, 255KV, 265KV, 275KV, 285KV, 295KV, 305KV, 315KV, 325KV, 335KV, 345KV, 355KV, 365KV, 375KV, 385KV, 395KV, 405KV, 415KV, 425KV, 435KV, 445KV, 455KV, 465KV, 475KV, 485KV, 495KV, 505KV, 515KV, 525KV, 535KV, 545KV, 555KV, 565KV, 575KV, 585KV, 595KV, 605KV, 615KV, 625KV, 635KV, 645KV, 655KV, 665KV, 675KV, 685KV, 695KV, 705KV, 715KV, 725KV, 735KV, 745KV, 755KV, 765KV, 775KV, 785KV, 795KV, 805KV, 815KV, 825KV, 835KV, 845KV, 855KV, 865KV, 875KV, 885KV, 895KV, 905KV, 915KV, 925KV, 935KV, 945KV, 955KV, 965KV, 975KV, 985KV, 995KV, 1000KV				
3.	2000V, 4000V, 6000V, 10KV, 17.5KV, 22KV, 33KV, 44KV, 66KV, 110KV, 132KV, 154KV, 175KV, 220KV, 252KV, 300KV, 330KV, 363KV, 400KV, 462KV, 517KV, 550KV, 600KV, 660KV, 726KV, 798KV, 88KV, 95KV, 105KV, 115KV, 125KV, 135KV, 145KV, 155KV, 165KV, 175KV, 185KV, 195KV, 205KV, 215KV, 225KV, 235KV, 245KV, 255KV, 265KV, 275KV, 285KV, 295KV, 305KV, 315KV, 325KV, 335KV, 345KV, 355KV, 365KV, 375KV, 385KV, 395KV, 405KV, 415KV, 425KV, 435KV, 445KV, 455KV, 465KV, 475KV, 485KV, 495KV, 505KV, 515KV, 525KV, 535KV, 545KV, 555KV, 565KV, 575KV, 585KV, 595KV, 605KV, 615KV, 625KV, 635KV, 645KV, 655KV, 665KV, 675KV, 685KV, 695KV, 705KV, 715KV, 725KV, 735KV, 745KV, 755KV, 765KV, 775KV, 785KV, 795KV, 805KV, 815KV, 825KV, 835KV, 845KV, 855KV, 865KV, 875KV, 885KV, 895KV, 905KV, 915KV, 925KV, 935KV, 945KV, 955KV, 965KV, 975KV, 985KV, 995KV, 1000KV				
4.	2000V, 4000V, 6000V, 10KV, 17.5KV, 22KV, 33KV, 44KV, 66KV, 110KV, 132KV, 154KV, 175KV, 220KV, 252KV, 300KV, 330KV, 363KV, 400KV, 462KV, 517KV, 550KV, 600KV, 660KV, 726KV, 798KV, 88KV, 95KV, 105KV, 115KV, 125KV, 135KV, 145KV, 155KV, 165KV, 175KV, 185KV, 195KV, 205KV, 215KV, 225KV, 235KV, 245KV, 255KV, 265KV, 275KV, 285KV, 295KV, 305KV, 315KV, 325KV, 335KV, 345KV, 355KV, 365KV, 375KV, 385KV, 395KV, 405KV, 415KV, 425KV, 435KV, 445KV, 455KV, 465KV, 475KV, 485KV, 495KV, 505KV, 515KV, 525KV, 535KV, 545KV, 555KV, 565KV, 575KV, 585KV, 595KV, 605KV, 615KV, 625KV, 635KV, 645KV, 655KV, 665KV, 675KV, 685KV, 695KV, 705KV, 715KV, 725KV, 735KV, 745KV, 755KV, 765KV, 775KV, 785KV, 795KV, 805KV, 815KV, 825KV, 835KV, 845KV, 855KV, 865KV, 875KV, 885KV, 895KV, 905KV, 915KV, 925KV, 935KV, 945KV, 955KV, 965KV, 975KV, 985KV, 995KV, 1000KV				
5.	2000V, 4000V, 6000V, 10KV, 17.5KV, 22KV, 33KV, 44KV, 66KV, 110KV, 132KV, 154KV, 175KV, 220KV, 252KV, 300KV, 330KV, 363KV, 400KV, 462KV, 517KV, 550KV, 600KV, 660KV, 726KV, 798KV, 88KV, 95KV, 105KV, 115KV, 125KV, 135KV, 145KV, 155KV, 165KV, 175KV, 185KV, 195KV, 205KV, 215KV, 225KV, 235KV, 245KV, 255KV, 265KV, 275KV, 285KV, 295KV, 305KV, 315KV, 325KV, 335KV, 345KV, 355KV, 365KV, 375KV, 385KV, 395KV, 405KV, 415KV, 425KV, 435KV, 445KV, 455KV, 465KV, 475KV, 485KV, 495KV, 505KV, 515KV, 525KV, 535KV, 545KV, 555KV, 565KV, 575KV, 585KV, 595KV, 605KV, 615KV, 625KV, 635KV, 645KV, 655KV, 665KV, 675KV, 685KV, 695KV, 705KV, 715KV, 725KV, 735KV, 745KV, 755KV, 765KV, 775KV, 785KV, 795KV, 805KV, 815KV, 825KV, 835KV, 845KV, 855KV, 865KV, 875KV, 885KV, 895KV, 905KV, 915KV, 925KV, 935KV, 945KV, 955KV, 965KV, 975KV, 985KV, 995KV, 1000KV				
6.	2000V, 4000V, 6000V, 10KV, 17.5KV, 22KV, 33KV, 44KV, 66KV, 110KV, 132KV, 154KV, 175KV, 220KV, 252KV, 300KV, 330KV, 363KV, 400KV, 462KV, 517KV, 550KV, 600KV, 660KV, 726KV, 798KV, 88KV, 95KV, 105KV, 115KV, 125KV, 135KV, 145KV, 155KV, 165KV, 175KV, 185KV, 195KV, 205KV, 215KV, 225KV, 235KV, 245KV, 255KV, 265KV, 275KV, 285KV, 295KV, 305KV, 315KV, 325KV, 335KV, 345KV, 355KV, 365KV, 375KV, 385KV, 395KV, 405KV, 415KV, 425KV, 435KV, 445KV, 455KV, 465KV, 475KV, 485KV, 495KV, 505KV, 515KV, 525KV, 535KV, 545KV, 555KV, 565KV, 575KV, 585KV, 595KV, 605KV, 615KV, 625KV, 635KV, 645KV, 655KV, 665KV, 675KV, 685KV, 695KV, 705KV, 715KV, 725KV, 735KV, 745KV, 755KV, 765KV, 775KV, 785KV, 795KV, 805KV, 815KV, 825KV, 835KV, 845KV, 855KV, 865KV, 875KV, 885KV, 895KV, 905KV, 915KV, 925KV, 935KV, 945KV, 955KV, 965KV, 975KV, 985KV, 995KV, 1000KV				
7.	2000V, 4000V, 6000V, 10KV, 17.5KV, 22KV, 33KV, 44KV, 66KV, 110KV, 132KV, 154KV, 175KV, 220KV, 252KV, 300KV, 330KV, 363KV, 400KV, 462KV, 517KV, 550KV, 600KV, 660KV, 726KV, 798KV, 88KV, 95KV, 105KV, 115KV, 125KV, 135KV, 145KV, 155KV, 165KV, 175KV, 185KV, 195KV, 205KV, 215KV, 225KV, 235KV, 245KV, 255KV, 265KV, 275KV, 285KV, 295KV, 305KV, 315KV, 325KV, 335KV, 345KV, 355KV, 365KV, 375KV, 385KV, 395KV, 405KV, 415KV, 425KV, 435KV, 445KV, 455KV, 465KV, 475KV, 485KV, 495KV, 505KV, 515KV, 525KV, 535KV, 545KV, 555KV, 565KV, 575KV, 585KV, 595KV, 605KV, 615KV, 625KV, 635KV, 645KV, 655KV, 665KV, 675KV, 685KV, 695KV, 705KV, 715KV, 725KV, 735KV, 745KV, 755KV, 765KV, 775KV, 785KV, 795KV, 805KV, 815KV, 825KV, 835KV, 845KV, 855KV, 865KV, 875KV, 885KV, 895KV, 905KV, 915KV, 925KV, 935KV, 945KV, 955KV, 965KV, 975KV, 985KV, 995KV, 1000KV				
8.	2000V, 4000V, 6000V, 10KV, 17.5KV, 22KV, 33KV, 44KV, 66KV, 110KV, 132KV, 154KV, 175KV, 220KV, 252KV, 300KV, 330KV, 363KV, 400KV, 462KV, 517KV, 550KV, 600KV, 660KV, 726KV, 798KV, 88KV, 95KV, 105KV, 115KV, 125KV, 135KV, 145KV, 155KV, 165KV, 175KV, 185KV, 195KV, 205KV, 215KV, 225KV, 235KV, 245KV, 255KV, 265KV, 275KV, 285KV, 295KV, 305KV, 315KV, 325KV, 335KV, 345KV, 355KV, 365KV, 375KV, 385KV, 395KV, 405KV, 415KV, 425KV, 435KV, 445KV, 455KV, 465KV, 475KV, 485KV, 495KV, 505KV, 515KV, 525KV, 535KV, 545KV, 555KV, 565KV, 575KV, 585KV, 595KV, 605KV, 615KV, 625KV, 635KV, 645KV, 655KV, 665KV, 675KV, 685KV, 695KV, 705KV, 715KV, 725KV, 735KV, 745KV, 755KV, 765KV, 775KV, 785KV, 795KV, 805KV, 815KV, 825KV, 835KV, 845KV, 855KV, 865KV, 875KV, 885KV, 895KV, 905KV, 915KV, 925KV, 935KV, 945KV, 955KV, 965KV, 975KV, 985KV, 995KV, 1000KV				
9.	2000V, 4000V, 6000V, 10KV, 17.5KV, 22KV, 33KV, 44KV, 66KV, 110KV, 132KV, 154KV, 175KV, 220KV, 252KV, 300KV, 330KV, 363KV, 400KV, 462KV, 517KV, 550KV, 600KV, 660KV, 726KV, 798KV, 88KV, 95KV, 105KV, 115KV, 125KV, 135KV, 145KV, 155KV, 165KV, 175KV, 185KV, 195KV, 205KV, 215KV, 225KV, 235KV, 245KV, 255KV, 265KV, 275KV, 285KV, 295KV, 305KV, 315KV, 325KV, 335KV, 345KV, 355KV, 365KV, 375KV, 385KV, 395KV, 405KV, 415KV, 425KV, 435KV, 445KV, 455KV, 465KV, 475KV, 485KV, 495KV, 505KV, 515KV, 525KV, 535KV, 545KV, 555KV, 565KV, 575KV, 585KV, 595KV, 605KV, 615KV, 625KV, 635KV, 645KV, 655KV, 665KV, 675KV, 685KV, 695KV, 705KV, 715KV, 725KV, 735KV, 745KV, 755KV, 765KV, 775KV, 785KV, 795KV, 805KV, 815KV, 825KV, 835KV, 845KV, 855KV, 865KV, 875KV, 885KV, 895KV, 905KV, 915KV, 925KV, 935KV, 945KV, 955KV, 965KV, 975KV, 985KV, 995KV, 1000KV				
10.	2000V, 4000V, 6000V, 10KV, 17.5KV, 22KV, 33KV, 44KV, 66KV, 110KV, 132KV, 154KV, 175KV, 220KV, 252KV, 300KV, 330KV, 363KV, 400KV, 462KV, 517KV, 550KV, 600KV, 660KV, 726KV, 798KV, 88KV, 95KV, 105KV, 115KV, 125KV, 135KV, 145KV, 155KV, 165KV, 175KV, 185KV, 195KV, 205KV, 215KV, 225KV, 235KV, 245KV, 255KV, 265KV, 275KV, 285KV, 295KV, 305KV, 315KV, 325KV, 335KV, 345KV, 355KV, 365KV, 375KV, 385KV, 395KV, 405KV, 415KV, 425KV, 435KV, 445KV, 455KV, 465KV, 475KV, 485KV, 495KV, 505KV, 515KV, 525KV, 535KV, 545KV, 555KV, 565KV, 575KV, 585KV, 595KV, 605KV, 615KV, 625KV, 635KV, 645KV, 655KV, 665KV, 675KV, 685KV, 695KV, 705KV, 715KV, 725KV, 735KV, 745KV, 755KV, 765KV, 775KV, 785KV, 795KV, 805KV, 815KV, 825KV, 835KV, 845KV, 855KV, 865KV, 875KV, 885KV, 895KV, 905KV, 915KV, 925KV, 935KV, 945KV, 955KV, 965KV, 975KV, 985KV, 995KV, 1000KV				
11.	2000V, 4000V, 6000V, 10KV, 17.5KV, 22KV, 33KV, 44KV, 66KV, 110KV, 132KV, 154KV, 175KV, 220KV, 252KV, 300KV, 330KV, 363KV, 400KV, 462KV, 517KV, 550KV, 600KV, 660KV, 726KV, 798KV, 88KV, 95KV, 105KV, 115KV, 125KV, 135KV, 145KV, 155KV, 165KV, 175KV, 185KV, 195KV, 205KV, 215KV, 225KV, 235KV, 245KV, 255KV, 265KV, 275KV, 285KV, 295KV, 305KV, 315KV, 325KV, 335KV, 345KV, 355KV, 365KV, 375KV, 385KV, 395KV, 405KV, 415KV, 425KV, 435KV, 445KV, 455KV, 465KV, 475KV, 485KV, 495KV, 505KV, 515KV, 525KV, 535KV, 545KV, 555KV, 565KV, 575KV, 585KV, 595KV, 605KV, 615KV, 625KV, 635KV, 645KV, 655KV, 665KV, 675KV, 685KV, 695KV, 705KV, 715KV, 725KV, 735KV, 745KV, 755KV, 765KV, 775KV, 785KV, 795KV, 805KV, 815KV, 825KV, 835KV, 845KV, 855KV, 865KV, 875KV, 885KV, 895KV, 905KV, 915KV, 925KV, 935KV, 945KV, 955KV, 965KV, 975KV, 985KV, 995KV, 1000KV				
12.	2000V, 4000V, 6000V, 10KV, 17.5KV, 22KV, 33KV, 44KV, 66KV, 110KV, 132KV, 154KV, 175KV, 220KV, 252KV, 300KV, 330KV, 363KV, 400KV, 462KV, 517KV, 550KV, 600KV, 660KV, 726KV, 798KV, 88KV, 95KV, 105KV, 115KV, 125KV, 135KV, 145KV, 155KV, 165KV, 175KV, 185KV, 195KV, 205KV, 215KV, 225KV, 235KV, 245KV, 255KV, 265KV, 275KV, 285KV, 295KV, 305KV, 315KV, 325KV, 335KV, 345KV, 355KV, 365KV, 375KV, 385KV, 395KV, 405KV, 415KV, 425KV, 435KV, 445KV, 455KV, 465KV, 475KV, 485KV, 495KV, 505KV, 515KV, 525KV, 535KV, 545KV, 555KV, 565KV, 575KV, 585KV, 595KV, 605KV, 615KV, 625KV, 635KV, 645KV, 655KV, 665KV, 675KV, 685KV, 695KV, 705KV, 715KV, 725KV, 735KV, 745KV, 755KV, 765KV, 775KV, 785KV, 795KV, 805KV, 815KV, 825KV, 835KV, 845KV, 855KV, 865KV, 875KV, 885KV, 895KV, 905KV, 915KV, 925KV, 935KV, 945KV, 955KV, 965KV, 975KV, 985KV, 995KV, 1000KV				
13.	2000V, 4000V, 6000V, 10KV, 17.5KV, 22KV, 33KV, 44KV, 66KV, 110KV, 132KV, 154KV, 175KV, 220KV, 252KV, 300KV, 330KV, 363KV, 400KV, 462KV, 517KV, 550KV, 600KV, 660KV, 726KV, 798KV, 88KV, 95KV, 105KV, 115KV, 125KV, 135KV, 145KV, 155KV, 165KV, 175KV, 185KV, 195KV, 205KV, 215KV, 225KV, 235KV, 245KV, 255KV, 265KV, 275KV, 285KV, 295KV, 305KV, 315KV, 325KV, 335KV, 345KV, 355KV, 365KV, 375KV, 385KV, 395KV, 405KV, 415KV, 425KV, 435KV, 445KV, 455KV, 465KV, 475KV, 485KV, 495KV, 505KV, 515KV, 525KV, 535KV, 545KV, 555KV, 565KV, 575KV, 585KV, 595KV, 605KV, 615KV, 625KV, 635KV, 645KV, 655KV, 665KV, 675KV, 685KV, 695KV, 705KV, 715KV, 725KV, 735KV, 745KV, 755KV, 765KV, 775KV, 785KV, 795KV, 805KV, 815KV, 825KV, 835KV, 845KV, 855KV, 865KV, 875KV, 885KV, 895KV, 905KV, 915KV, 925KV, 935KV, 945KV, 955KV, 965KV, 975KV, 985KV, 995KV, 1000KV				
14.	2000V, 4000V, 6000V, 10KV, 17.5KV, 22KV, 33KV, 44KV, 66KV, 110KV, 132KV, 154KV, 175KV, 220KV, 252KV, 300KV, 330KV, 363KV, 400KV, 462KV, 517KV, 550KV, 600KV, 660KV, 726KV, 798KV, 88KV, 95KV, 105KV, 115KV, 125KV, 135KV, 145KV, 155KV, 165KV, 175KV, 185KV, 195KV, 205KV, 215KV, 225KV, 235KV, 245KV, 255KV, 265KV, 275KV, 285KV, 295KV, 305KV, 315KV, 325KV, 335KV, 345KV, 355KV, 365KV, 375KV, 385KV, 395KV, 405KV, 415KV, 425KV, 435KV, 445KV, 455KV, 465KV, 475KV, 485KV, 495KV, 505KV, 515KV, 525KV, 535KV, 545KV, 555KV, 565KV, 575KV, 585KV, 595KV, 605KV, 615KV, 625KV, 635KV, 645KV, 655KV, 665KV, 675KV, 685KV, 695KV, 705KV, 715KV, 725KV, 735KV, 745KV, 755KV, 765KV, 775KV, 785KV, 795KV, 805KV, 815KV, 825KV, 835KV, 845KV, 855KV, 865KV, 875KV, 885KV, 895KV, 905KV, 915KV, 925KV, 935KV, 945KV, 955KV, 965KV, 975KV, 985KV, 995KV, 1000KV				
15.	2000V, 4000V, 6000V, 10KV, 17.5KV, 22KV, 33KV, 44KV, 66KV, 110KV, 132KV, 154KV, 175KV, 220KV, 252KV, 300KV, 330KV, 363KV, 400KV, 462KV, 517KV, 550KV, 600KV, 660KV, 726KV, 798KV, 88KV, 95KV, 105KV, 115KV, 125KV, 135KV, 145KV, 155KV, 165KV, 175KV, 185KV, 195KV, 205KV, 215KV, 225KV, 235KV, 245KV, 255KV, 265KV, 275KV, 285KV, 295KV, 305KV, 315KV, 325KV, 335KV, 345KV, 355KV, 365KV, 375KV, 385KV, 395KV, 405KV, 415KV, 425KV, 435KV, 445KV, 455KV, 465KV, 475KV, 485KV, 495KV, 505KV, 515KV, 525KV, 535KV, 545KV, 555KV, 565KV, 575KV, 585KV, 595KV, 605KV, 615KV, 625KV, 635KV, 645KV, 655KV, 665KV, 675KV, 685KV, 695KV, 705KV, 715KV, 725KV, 735KV, 745KV, 755KV, 765KV, 775KV, 785KV, 795KV, 805KV, 815KV, 825KV, 835KV, 845KV, 855KV, 865KV, 875KV, 885KV, 895KV, 905KV, 915KV, 925KV, 935KV, 945KV, 955KV, 965KV, 975KV, 985KV, 995KV, 1000KV				
16.	2000V, 4000V, 6000V, 10KV, 17.5KV, 22KV, 33KV, 44KV, 66KV, 110KV, 132KV, 154KV, 175KV, 220KV, 252KV, 300KV, 330KV, 363KV, 400KV, 462KV, 517KV, 550KV, 600KV, 660KV, 726KV, 798KV, 88KV, 95KV, 105KV, 115KV, 125KV, 135KV, 145KV, 155KV, 165KV, 175KV, 185KV, 195KV, 205KV, 215KV, 225KV, 235KV, 245KV, 255KV, 265KV, 275KV, 285KV, 295KV, 305KV, 315KV, 325KV, 335KV, 345KV, 355KV, 365KV, 375KV, 385KV, 395KV, 405KV, 415KV, 425KV, 435KV, 445KV, 455KV, 465KV, 475KV, 485KV, 495KV, 505KV, 515KV, 525KV, 535KV, 545KV, 555KV, 565KV, 575KV, 585KV, 595KV, 605KV, 615KV, 625KV, 635KV, 645KV, 655KV, 665KV, 675KV, 685KV, 695KV, 705KV, 715KV, 725KV, 735KV, 745KV, 755KV, 765KV, 775KV, 785KV, 795KV, 805KV, 815KV, 825KV, 835KV, 845KV, 855KV, 865KV, 875KV, 885KV, 895KV, 905KV, 915KV, 925KV, 935KV, 945KV, 955KV, 965KV, 975KV, 985KV, 995KV, 1000KV				
17.	2000V, 4000V, 6000V, 10KV, 17.5KV, 22KV, 33KV, 44KV, 66KV, 110KV, 132KV, 154KV, 175KV, 220KV, 252KV, 300KV, 330KV, 363KV, 400KV, 462KV, 517KV, 550KV, 600KV, 660KV, 726KV, 798KV, 88KV, 95KV, 105KV, 115KV, 125KV, 135KV, 145KV, 155KV, 165KV, 175KV, 185KV, 195KV, 205KV, 215KV, 225KV, 235KV, 245KV, 255KV, 265KV, 275KV, 285KV, 295KV, 305KV,				

A. 220 KV OUTDOOR EQUIPMENT:-				
S.N.	DESCRIPTION	SYMBOLS (LEGEND)	BAY NO/LOCATION	UNIT
1.	2000V, 400V, 600V, 10KV, 17.5KV, 22KV, 33KV, 44KV, 66KV, 110KV, 132KV, 154KV, 175KV, 220KV, 252KV, 300KV, 330KV, 363KV, 400KV, 462KV, 517KV, 550KV, 600KV, 660KV, 726KV, 798KV, 88KV, 95KV, 105KV, 115KV, 125KV, 135KV, 145KV, 155KV, 165KV, 175KV, 185KV, 195KV, 205KV, 215KV, 225KV, 235KV, 245KV, 255KV, 265KV, 275KV, 285KV, 295KV, 305KV, 315KV, 325KV, 335KV, 345KV, 355KV, 365KV, 375KV, 385KV, 395KV, 405KV, 415KV, 425KV, 435KV, 445KV, 455KV, 465KV, 475KV, 485KV, 495KV, 505KV, 515KV, 525KV, 535KV, 545KV, 555KV, 565KV, 575KV, 585KV, 595KV, 605KV, 615KV, 625KV, 635KV, 645KV, 655KV, 665KV, 675KV, 685KV, 695KV, 705KV, 715KV, 725KV, 735KV, 745KV, 755KV, 765KV, 775KV, 785KV, 795KV, 805KV, 815KV, 825KV, 835KV, 845KV, 855KV, 865KV, 875KV, 885KV, 895KV, 905KV, 915KV, 925KV, 935KV, 945KV, 955KV, 965KV, 975KV, 985KV, 995KV, 1000KV	$\frac{1}{2}$	201, 202	MOS
2.	2000V, 400V, 600V, 10KV, 17.5KV, 22KV, 33KV, 44KV, 66KV, 110KV, 132KV, 154KV, 175KV, 220KV, 252KV, 300KV, 330KV, 363KV, 400KV, 462KV, 517KV, 550KV, 600KV, 660KV, 726KV, 798KV, 88KV, 95KV, 105KV, 115KV, 125KV, 135KV, 145KV, 155KV, 165KV, 175KV, 185KV, 195KV, 205KV, 215KV, 225KV, 235KV, 245KV, 255KV, 265KV, 275KV, 285KV, 295KV, 305KV, 315KV, 325KV, 335KV, 345KV, 355KV, 365KV, 375KV, 385KV, 395KV, 405KV, 415KV, 425KV, 435KV, 445KV, 455KV, 465KV, 475KV, 485KV, 495KV, 505KV, 515KV, 525KV, 535KV, 545KV, 555KV, 565KV, 575KV, 585KV, 595KV, 605KV, 615KV, 625KV, 635KV, 645KV, 655KV, 665KV, 675KV, 685KV, 695KV, 705KV, 715KV, 725KV, 735KV, 745KV, 755KV, 765KV, 775KV, 785KV, 795KV, 805KV, 815KV, 825KV, 835KV, 845KV, 855KV, 865KV, 875KV, 885KV, 895KV, 905KV, 915KV, 925KV, 935KV, 945KV, 955KV, 965KV, 975KV, 985KV, 995KV, 1000KV	201	201, 202, 203, 204, 205, 206, 207, 208, 209, 210, 211, 212, 213, 214, 215, 216, 217, 218, 219, 220, 221, 222, 223, 224, 225, 226, 227, 228, 229, 230, 231, 232, 233, 234, 235, 236, 237, 238, 239, 240, 241, 242, 243, 244, 245, 246, 247, 248, 249, 250, 251, 252, 253, 254, 255, 256, 257, 258, 259, 260, 261, 262, 263, 264, 265, 266, 267, 268, 269, 270, 271, 272, 273, 274, 275, 276, 277, 278, 279, 280, 281, 282, 283, 284, 285, 286, 287, 288, 289, 290, 291, 292, 293, 294, 295, 296, 297, 298, 299, 300, 301, 302, 303, 304, 305, 306, 307, 308, 309, 310, 311, 312, 313, 314, 315, 316, 317, 318, 319, 320, 321, 322, 323, 324, 325, 326, 327, 328, 329, 330, 331, 332, 333, 334, 335, 336, 337, 338, 339, 340, 341, 342, 343, 344, 345, 346, 347, 348, 349, 350, 351, 352, 353, 354, 355, 356, 357, 358, 359, 360, 361, 362, 363, 364, 365, 366, 367, 368, 369, 370, 371, 372, 373, 374, 375, 376, 377, 378, 379, 380, 381, 382, 383, 384, 385, 386, 387, 388, 389, 390, 391, 392, 393, 394, 395, 396, 397, 398, 399, 400, 401, 402, 403, 404, 405, 406, 407, 408, 409, 410, 411, 412, 413, 414, 415, 416, 417, 418, 419, 420, 421, 422, 423, 424, 425, 426, 427, 428, 429, 430, 431, 432, 433, 434, 435, 436, 437, 438, 439, 440, 441, 442, 443, 444, 445, 446, 447, 448, 449, 450, 451, 452, 453, 454, 455, 456, 457, 458, 459, 460, 461, 462, 463, 464, 465, 466, 467, 468, 469, 470, 471, 472, 473, 474, 475, 476, 477, 478, 479, 480, 481, 482, 483, 484, 485, 486, 487, 488, 489, 490, 491, 492, 493, 494, 495, 496, 497, 498, 499, 500, 501, 502, 503, 504, 505, 506, 507, 508, 509, 510, 511, 512, 513, 514, 515, 516, 517, 518, 519, 520, 521, 522, 523, 524, 525, 526, 527, 528, 529, 530, 531, 532, 533, 534, 535, 536, 537, 538, 539, 540, 541, 542, 543, 544, 545, 546, 547, 548, 549, 550, 551, 552, 553, 554, 555, 556, 557, 558, 559, 560, 561, 562, 563, 564, 565, 566, 567, 568, 569, 570, 571, 572, 573, 574, 575, 576, 577, 578, 579, 580, 581, 582, 583, 584, 585, 586, 587, 588, 589, 590, 591, 592, 593, 594, 595, 596, 597, 598, 599, 600, 601, 602, 603, 604, 605, 606, 607, 608, 609, 610, 611, 612, 613, 614, 615, 616, 617, 618, 619, 620, 621, 622, 623, 624, 625, 626, 627, 628, 629, 630, 631, 632, 633, 634, 635, 636, 637, 638, 639, 640, 641, 642, 643, 644, 645, 646, 647, 648, 649, 650, 651, 652, 653, 654, 655, 656, 657, 658, 659, 660, 661, 662, 663, 664, 665, 666, 667, 668, 669, 670, 671, 672, 673, 674, 675, 676, 677, 678, 679, 680, 681, 682, 683, 684, 685, 686, 687, 688, 689, 690, 691, 692, 693, 694, 695, 696, 697, 698, 699, 700, 701, 702, 703, 704, 705, 706, 707, 708, 709, 710, 711, 712, 713, 714, 715, 716, 717, 718, 719, 720, 721, 722, 723, 724, 725, 726, 727, 728, 729, 730, 731, 732, 733, 734, 735, 736, 737, 738, 739, 740, 741, 742, 743, 744, 745, 746, 747, 748, 749, 750, 751, 752, 753, 754, 755, 756, 757, 758, 759, 760, 761, 762, 763, 764, 765, 766, 767, 768, 769, 770, 771, 772, 773, 774, 775, 776, 777, 778, 779, 780, 781, 782, 783, 784, 785, 786, 787, 788, 789, 790, 791, 792, 793, 794, 795, 796, 797, 798, 799, 800, 801, 802, 803, 804, 805, 806, 807, 808, 809, 810, 811, 812, 813, 814, 815, 816, 817, 818, 819, 820, 821, 822, 823, 824, 825, 826, 827, 828, 829, 830, 831, 832, 833, 834, 835, 836, 837, 838, 839, 840, 841, 842, 843, 844, 845, 846, 847, 848, 849, 850, 851, 852, 853, 854, 855, 856, 857, 858, 859, 860, 861, 862, 863, 864, 865, 866, 867, 868, 869, 870, 871, 872, 873, 874, 875, 876, 877, 878, 879, 880, 881, 882, 883, 884, 885, 886, 887, 888, 889, 890, 891, 892, 893, 894, 895, 896, 897, 898, 899, 900, 901, 902, 903, 904, 905, 906, 907, 908, 909, 910, 911, 912, 913, 914, 915, 916, 917, 918, 919, 920, 921, 922, 923, 924, 925, 926, 927, 928, 929, 930, 931, 932, 933, 934, 935, 936, 937, 938, 939, 940, 941, 942, 943, 944, 945, 946, 947, 948, 949, 950, 951, 952, 953, 954, 955, 956, 957, 958, 959, 960, 961, 962, 963, 964, 965, 966, 967, 968, 969, 970, 971, 972, 973, 974, 975, 976, 977, 978, 979, 980, 981, 982, 983, 984, 985, 986, 987, 988, 989, 990, 991, 992, 993, 994, 995, 996, 997, 998, 999, 1000	MOS
3.	2000V, 400V, 600V, 10KV, 17.5KV, 22KV, 33KV, 44KV, 66KV, 110KV, 132KV, 154KV, 175KV, 220KV, 252KV, 300KV, 330KV, 363KV, 400KV, 462KV, 517KV, 550KV, 600KV, 660KV, 726KV, 798KV, 88KV, 95KV, 105KV, 115KV, 125KV, 135KV, 145KV, 155KV, 165KV, 175KV, 185KV, 195KV, 205KV, 215KV, 225KV, 235KV, 245KV, 255KV, 265KV, 275KV, 285KV, 295KV, 305KV, 315KV, 325KV, 335KV, 345KV, 355KV, 365KV, 375KV, 385KV, 395KV, 405KV, 415KV, 425KV, 435KV, 445KV, 455KV, 465KV, 475KV, 485KV, 495KV, 505KV, 515KV, 525KV, 535KV, 545KV, 555KV, 565KV, 575KV, 585KV, 595KV, 605KV, 615KV, 625KV, 635KV, 645KV, 655KV, 665KV, 675KV, 685KV, 695KV, 705KV, 715KV, 725KV, 735KV, 745KV, 755KV, 765KV, 775KV, 785KV, 795KV, 805KV, 815KV, 825KV, 835KV, 845KV, 855KV, 865KV, 875KV, 885KV, 895KV, 905KV, 915KV, 925KV, 935KV, 945KV, 955KV, 965KV, 975KV, 985KV, 995KV, 1000KV	202	201, 202, 203, 204, 205, 206, 207, 208, 209, 210, 211, 212, 213, 214, 215, 216, 217, 218, 219, 220, 221, 222, 223, 224, 225, 226, 227, 228, 229, 230, 231, 232, 233, 234, 235, 236, 237, 238, 239, 240, 241, 242, 243, 244, 245, 246, 247, 248, 249, 250, 251, 252, 253, 254, 255, 256, 257, 258, 259, 260, 261, 262, 263, 264, 265, 266, 267, 268, 269, 270, 271, 272, 273, 274, 275, 276, 277, 278, 279, 280, 281, 282, 283, 284, 285, 286, 287, 288, 289, 290, 291, 292, 293, 294, 295, 296, 297, 298, 299, 300, 301, 302, 303, 304, 305, 306, 307, 308, 309, 310, 311, 312, 313, 314, 315, 316, 317, 318, 319, 320, 321, 322, 323, 324, 325, 326, 327, 328, 329, 330, 331, 332, 333, 334, 335, 336, 337, 338, 339, 340, 341, 342, 343, 344, 345, 346, 347, 348, 349, 350, 351, 352, 353, 354, 355, 356, 357, 358, 359, 360, 361, 362, 363, 364, 365, 366, 367, 368, 369, 370, 371, 372, 373, 374, 375, 376, 377, 378, 379, 380, 381, 382, 383, 384, 385, 386, 387, 388, 389, 390, 391, 392, 393, 394, 395, 396, 397, 398, 399, 400, 401, 402, 403, 404, 405, 406, 407, 408, 409, 410, 411, 412, 413, 414, 415, 416, 417, 418, 419, 420, 421, 422, 423, 424, 425, 426, 427, 428, 429, 430, 431, 432, 433, 434, 435, 436, 437, 438, 439, 440, 441, 442, 443, 444, 445, 446, 447, 448, 449, 450, 451, 452, 453, 454, 455, 456, 457, 458, 459, 460, 461, 462, 463, 464, 465, 466, 467, 468, 469, 470, 471, 472, 473, 474, 475, 476, 477, 478, 479, 480, 481, 482, 483, 484, 485, 486, 487, 488, 489, 490, 491, 492, 493, 494, 495, 496, 497, 498, 499, 500, 501, 502, 503, 504, 505, 506, 507, 508, 509, 510, 511, 512, 513, 514, 515, 516, 517, 518, 519, 520, 521, 522, 523, 524, 525, 526, 527, 528, 529, 530, 531, 532, 533, 534, 535, 536, 537, 538, 539, 540, 541, 542, 543, 544, 545, 546, 547, 548, 549, 550, 551, 552, 553, 554, 555, 556, 557, 558, 559, 560, 561, 562, 563, 564, 565, 566, 567, 568, 569, 570, 571, 572, 573, 574, 575, 576, 577, 578, 579, 580, 581, 582, 583, 584, 585, 586, 587, 588, 589, 590, 591, 592, 593, 594, 595, 596, 597, 598, 599, 600, 601, 602, 603, 604, 605, 606, 607, 608, 609, 610, 611, 612, 613, 614, 615, 616, 617, 618, 619, 620, 621, 622, 623, 624, 625, 626, 627, 628, 629, 630, 631, 632, 633, 634, 635, 636, 637, 638, 639, 640, 641, 642, 643, 644, 645, 646, 647, 648, 649, 650, 651, 652, 653, 654, 655, 656, 657, 658, 659, 660, 661, 662, 663, 664, 665, 666, 667, 668, 669, 670, 671, 672, 673, 674, 675, 676, 677, 678, 679, 680, 681, 682, 683, 684, 685, 686, 687, 688, 689, 690, 691, 692, 693, 694, 695, 696, 697, 698, 699, 700, 701, 702, 703, 704, 705, 706, 707, 708, 709, 710, 711, 712, 713, 714, 715, 716, 717, 718, 719, 720, 721, 722, 723, 724, 725, 726, 727, 728, 729, 730, 731, 732, 733, 734, 735, 736, 737, 738, 739, 740, 741, 742, 743, 744, 745, 746, 747, 748, 749, 750, 751, 752, 753, 754, 755, 756, 757, 758, 759, 760, 761, 762, 763, 764, 765, 766, 767, 768, 769, 770, 771, 772, 773, 774, 775, 776, 777, 778, 779, 780, 781, 782, 783, 784, 785, 786, 787, 788, 789, 790, 791, 792, 793, 794, 795, 796, 797, 798, 799, 800, 801, 802, 803, 804, 805, 806, 807, 808, 809, 810, 811, 812, 813, 814, 815, 816, 817, 818, 819, 820, 821, 822, 823, 824, 825, 826, 827, 828, 829, 830, 831, 832, 833, 834, 835, 836, 837, 838, 839, 840, 841, 842, 843, 844, 845, 846, 847, 848, 849, 850, 851, 852, 853, 854, 855, 856, 857, 858, 859, 860, 861, 862, 863, 864, 865, 866, 867, 868, 869, 870, 871, 872, 873, 874, 875, 876, 877, 878, 879, 880, 881, 882, 883, 884, 885, 886, 887, 888, 889, 890, 891, 892, 893, 894, 895, 896, 897, 898, 899, 900, 901, 902, 903, 904, 905, 906, 907, 908, 909, 910, 911, 912, 913, 914, 915, 916, 917, 918, 919, 920, 921, 922, 923, 924, 925, 926, 927, 928, 929, 930, 931, 932, 933, 934, 935, 936, 937, 938, 939, 940, 941, 942, 943, 944, 945, 946, 947, 948, 949, 950, 951, 952, 953, 954, 955, 956, 957, 958, 959, 960, 961, 962, 963, 964, 965, 966, 967, 968, 969, 970, 971, 972, 973, 974, 975, 976, 977, 978, 979, 980, 981, 982, 983, 984, 985, 986, 987, 988, 989, 990, 991, 992, 993, 994, 995, 996, 997, 998, 999, 1000	MOS
4.	2000V, 400V, 600V, 10KV, 17.5KV, 22KV, 33KV, 44KV, 66KV, 110KV, 132KV, 154KV, 175KV, 220KV, 252KV, 300KV, 330KV, 363KV, 400KV, 462KV, 517KV, 550KV, 600KV, 660KV, 726KV, 798KV, 88KV, 95KV, 105KV, 115KV, 125KV, 135KV, 145KV, 155KV, 165KV, 175KV, 185KV, 195KV, 205KV, 215KV, 225KV, 235KV, 245KV, 255KV, 265KV, 275KV, 285KV, 295KV, 305KV, 315KV, 325KV, 335KV, 345KV, 355KV, 365KV, 375KV, 385KV, 395KV, 405KV, 415KV, 425KV, 435KV, 445KV, 455KV, 465KV, 475KV, 485KV, 495KV, 505KV, 515KV, 525KV, 535KV, 545KV, 555KV, 565KV, 575KV, 585KV, 595KV, 605KV, 615KV, 625KV, 635KV, 645KV, 655KV, 665KV, 675KV, 685KV, 695KV, 705KV, 715KV, 725KV, 735KV, 745KV, 755KV, 765KV, 775KV, 785KV, 795KV, 805KV, 815KV, 825KV, 835KV, 845KV, 855KV, 865KV, 875KV, 885KV, 895KV, 905KV, 915KV, 925KV, 935KV, 945KV, 955KV, 965KV, 975KV, 985KV, 995KV, 1000KV	203	201, 202, 203, 204, 205, 206, 207, 208, 209, 210, 211, 212, 213, 214, 215, 216, 217, 218, 219, 220, 221, 222, 223, 224, 225, 226, 227, 228, 229, 230, 231, 232, 233, 234, 235, 236, 237, 238, 239, 240, 241, 242, 243, 244, 245, 246, 247, 248, 249, 250, 251, 252, 253, 254, 255, 256, 257, 258, 259, 260, 261, 262, 263, 264, 265, 266, 267, 268, 269, 270, 271, 272, 273, 274, 275, 276, 277, 278, 279, 280, 281, 282, 283, 284, 285, 286, 287, 288, 289, 290, 291, 292, 293, 294, 295, 296, 297, 298, 299, 300, 301, 302, 303, 304, 305, 306, 307, 308, 309, 310, 311, 312, 313, 314, 315, 316, 317, 318, 319, 320, 321, 322, 323, 324, 325, 326, 327, 328, 329, 330, 331, 332, 333, 334, 335, 336, 337, 338, 339, 340, 341, 342, 343, 344, 345, 346, 347, 348, 349, 350, 351, 352, 353, 354, 355, 356, 357, 358, 359, 360, 361, 362, 363, 364, 365, 366, 367, 368, 369, 370, 371, 372, 373, 374, 375, 376, 377, 378, 379, 380, 381, 382, 383, 384, 385, 386, 387, 388, 389, 390, 391, 392, 393, 394, 395, 396, 397, 398, 399, 400, 401, 402, 403, 404, 405, 406, 407, 408, 409, 410, 411, 412, 413, 414, 415, 416, 417, 418, 419, 420, 421, 422, 423, 424, 425, 426, 427, 428, 429, 430, 431, 432, 433, 434, 435, 436, 437, 438, 439, 440, 441, 442, 443, 444, 445, 446, 447, 448, 449, 450, 451, 452, 453, 454, 455, 456, 457, 458, 459, 460, 461, 462, 463, 464, 465, 466, 467, 468, 469, 4	

B. 220 KV INDOOR GIS:-				
S.N.	DESCRIPTION	SYMBOLS (LEGEND)	BAY NO/LOCATION	UNIT
1.	600V, 400V, 600V, 10KV, 17.5KV, 22KV, 33KV, 44KV, 66KV, 110KV, 132KV, 154KV, 175KV, 220KV, 252KV, 300KV, 330KV, 363KV, 400KV, 462KV, 517KV, 550KV, 600KV, 660KV, 726KV, 798KV, 88KV, 95KV, 105KV, 115KV, 125KV, 135KV, 145KV, 155KV, 165KV, 175KV, 185KV, 195KV, 205KV, 215KV, 225KV, 235KV, 245KV, 255KV, 265KV, 275KV, 285KV, 295KV, 305KV, 315KV, 325KV, 335KV, 345KV, 355KV, 365KV, 375KV, 385KV, 395KV, 405KV, 415KV, 425KV, 435KV, 445KV, 455KV, 465KV, 475KV, 485KV, 495KV, 505KV, 515KV, 525KV, 535KV, 545KV, 555KV, 565KV, 575KV, 585KV, 595KV, 605KV, 615KV, 625KV, 635KV, 645KV, 655KV, 665KV, 675KV, 685KV, 695KV, 705KV, 715KV, 725KV, 735KV, 745KV, 755KV, 765KV, 775KV, 785KV, 795KV, 805KV, 815KV, 825KV, 835KV, 845KV, 855KV, 865KV, 875KV, 885KV, 895KV, 905KV, 915KV, 925KV, 935KV, 945KV, 955KV, 965KV, 975KV, 985KV, 995KV, 1000KV		1000, 100	

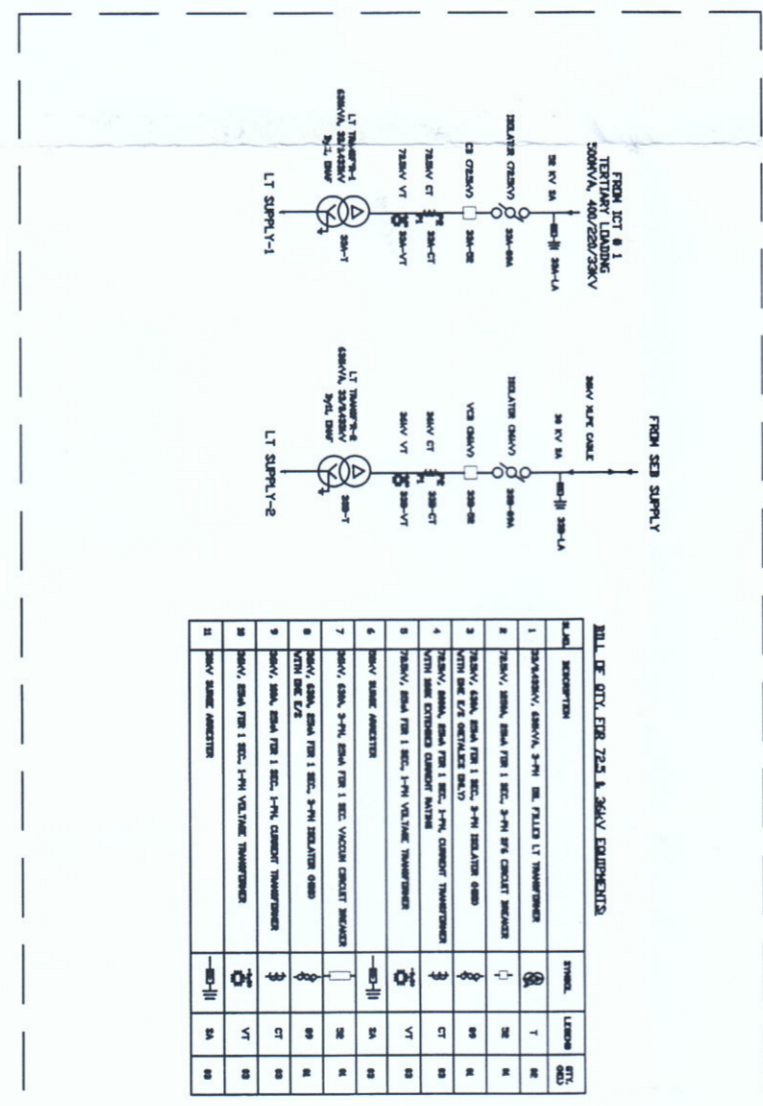
S.N.	DESCRIPTION	SYMBOLS	LEGEND	BAY NO/LOCATION
1.	220KV, 110KV, 66KV, 33KV, 22KV, 17.5KV, 10KV, 6KV, 4KV, 3KV, 2KV, 1.5KV, 1.1KV, 0.6KV, 0.4KV, 0.2KV, 0.15KV, 0.1KV, 0.075KV, 0.05KV, 0.03KV, 0.02KV, 0.015KV, 0.01KV, 0.0075KV, 0.005KV, 0.003KV, 0.002KV, 0.0015KV, 0.001KV, 0.00075KV, 0.0005KV, 0.0003KV, 0.0002KV, 0.00015KV, 0.0001KV, 0.000075KV, 0.00005KV, 0.00003KV, 0.00002KV, 0.000015KV, 0.00001KV, 0.0000075KV, 0.000005KV, 0.000003KV, 0.000002KV, 0.0000015KV, 0.000001KV, 0.00000075KV, 0.0000005KV, 0.0000003KV, 0.0000002KV, 0.00000015KV, 0.0000001KV, 0.000000075KV, 0.00000005KV, 0.00000003KV, 0.00000002KV, 0.000000015KV, 0.00000001KV, 0.0000000075KV, 0.000000005KV, 0.000000003KV, 0.000000002KV, 0.0000000015KV, 0.000000001KV, 0.00000000075KV, 0.0000000005KV, 0.0000000003KV, 0.0000000002KV, 0.00000000015KV, 0.0000000001KV, 0.000000000075KV, 0.00000000005KV, 0.00000000003KV, 0.00000000002KV, 0.000000000015KV, 0.00000000001KV, 0.0000000000075KV, 0.000000000005KV, 0.000000000003KV, 0.000000000002KV, 0.0000000000015KV, 0.000000000001KV, 0.00000000000075KV, 0.0000000000005KV, 0.0000000000003KV, 0.0000000000002KV, 0.00000000000015KV, 0.0000000000001KV, 0.000000000000075KV, 0.00000000000005KV, 0.00000000000003KV, 0.00000000000002KV, 0.000000000000015KV, 0.00000000000001KV, 0.0000000000000075KV, 0.000000000000005KV, 0.000000000000003KV, 0.000000000000002KV, 0.0000000000000015KV, 0.000000000000001KV, 0.00000000000000075KV, 0.0000000000000005KV, 0.0000000000000003KV, 0.0000000000000002KV, 0.00000000000000015KV, 0.0000000000000001KV, 0.000000000000000075KV, 0.00000000000000005KV, 0.00000000000000003KV, 0.00000000000000002KV, 0.000000000000000015KV, 0.00000000000000001KV, 0.0000000000000000075KV, 0.000000000000000005KV, 0.000000000000000003KV, 0.000000000000000002KV, 0.0000000000000000015KV, 0.000000000000000001KV, 0.00000000000000000075KV, 0.0000000000000000005KV, 0.0000000000000000003KV, 0.0000000000000000002KV, 0.00000000000000000015KV, 0.0000000000000000001KV, 0.000000000000000000075KV, 0.00000000000000000005KV, 0.00000000000000000003KV, 0.00000000000000000002KV, 0.000000000000000000015KV, 0.00000000000000000001KV, 0.0000000000000000000075KV, 0.000000000000000000005KV, 0.000000000000000000003KV, 0.000000000000000000002KV, 0.0000000000000000000015KV, 0.000000000000000000001KV, 0.00000000000000000000075KV, 0.0000000000000000000005KV, 0.0000000000000000000003KV, 0.0000000000000000000002KV, 0.00000000000000000000015KV, 0.0000000000000000000001KV, 0.000000000000000000000075KV, 0.00000000000000000000005KV, 0.00000000000000000000003KV, 0.00000000000000000000002KV, 0.000000000000000000000015KV, 0.00000000000000000000001KV, 0.0000000000000000000000075KV, 0.000000000000000000000005KV, 0.000000000000000000000003KV, 0.000000000000000000000002KV, 0.0000000000000000000000015KV, 0.000000000000000000000001KV, 0.00000000000000000000000075KV, 0.0000000000000000000000005KV, 0.0000000000000000000000003KV, 0.0000000000000000000000002KV, 0.00000000000000000000000015KV, 0.0000000000000000000000001KV, 0.000000000000000000000000075KV, 0.00000000000000000000000005KV, 0.00000000000000000000000003KV, 0.00000000000000000000000002KV, 0.000000000000000000000000015KV, 0.00000000000000000000000001KV, 0.0000000000000000000000000075KV, 0.000000000000000000000000005KV, 0.000000000000000000000000003KV, 0.000000000000000000000000002KV, 0.0000000000000000000000000015KV, 0.000000000000000000000000001KV, 0.00000000000000000000000000075KV, 0.0000000000000000000000000005KV, 0.0000000000000000000000000003KV, 0.0000000000000000000000000002KV, 0.00000000000000000000000000015KV, 0.0000000000000000000000000001KV, 0.000000000000000000000000000075KV, 0.00000000000000000000000000005KV, 0.00000000000000000000000000003KV, 0.00000000000000000000000000002KV, 0.000000000000000000000000000015KV, 0.00000000000000000000000000001KV, 0.0000000000000000000000000000075KV, 0.000000000000000000000000000005KV, 0.000000000000000000000000000003KV, 0.000000000000000000000000000002KV, 0.0000000000000000000000000000015KV, 0.000000000000000000000000000001KV, 0.00000000000000000000000000000075KV, 0.0000000000000000000000000000005KV, 0.0000000000000000000000000000003KV, 0.0000000000000000000000000000002KV, 0.00000000000000000000000000000015KV, 0.0000000000000000000000000000001KV, 0.000000000000000000000000000000075KV, 0.00000000000000000000000000000005KV, 0.00000000000000000000000000000003KV, 0.00000000000000000000000000000002KV, 0.000000000000000000000000000000015KV, 0.00000000000000000000000000000001KV, 0.0000000000000000000000000000000075KV, 0.000000000000000000000000000000005KV, 0.000000000000000000000000000000003KV, 0.000000000000000000000000000000002KV, 0.0000000000000000000000000000000015KV, 0.000000000000000000000000000000001KV, 0.00000000000000000000000000000000075KV, 0.0000000000000000000000000000000005KV, 0.0000000000000000000000000000000003KV, 0.0000000000000000000000000000000002KV, 0.00000000000000000000000000000000015KV, 0.0000000000000000000000000000000001KV, 0.000000000000000000000000000000000075KV, 0.00000000000000000000000000000000005KV, 0.00000000000000000000000000000000003KV, 0.00000000000000000000000000000000002KV, 0.000000000000000000000000000000000015KV, 0.00000000000000000000000000000000001KV, 0.0000000000000000000000000000000000075KV, 0.000000000000000000000000000000000005KV, 0.000000000000000000000000000000000003KV, 0.000000000000000000000000000000000002KV, 0.0000000000000000000000000000000000015KV, 0.000000000000000000000000000000000001KV, 0.00000000000000000000000000000000000075KV, 0.0000000000000000000000000000000000005KV, 0.0000000000000000000000000000000000003KV, 0.0000000000000000000000000000000000002KV, 0.00000000000000000000000000000000000015KV, 0.0000000000000000000000000000000000001KV, 0.000000000000000000000000000000000000075KV, 0.00000000000000000000000000000000000005KV, 0.00000000000000000000000000000000000003KV, 0.00000000000000000000000000000000000002KV, 0.000000000000000000000000000000000000015KV, 0.00000000000000000000000000000000000001KV, 0.0000000000000000000000000000000000000075KV, 0.000000000000000000000000000000000000005KV, 0.000000000000000000000000000000000000003KV, 0.000000000000000000000000000000000000002KV, 0.0000000000000000000000000000000000000015KV, 0.000000000000000000000000000000000000001KV, 0.00000000000000000000000000000000000000075KV, 0.0000000000000000000000000000000000000005KV, 0.0000000000000000000000000000000000000003KV, 0.0000000000000000000000000000000000000002KV, 0.00000000000000000000000000000000000000015KV, 0.0000000000000000000000000000000000000001KV, 0.0075KV, 0.005KV, 0.003KV, 0.002KV, 0.0015KV, 0.001KV, 0.00075KV, 0.0005KV, 0.0003KV, 0.0002KV, 0.00015KV, 0.0001KV, 0.0075KV, 0.005KV, 0.003KV, 0.002KV, 0.0015KV, 0.001KV, 0.00075KV, 0.0005KV, 0.0003KV, 0.0002KV, 0.00015KV, 0.0001KV, 0.0075KV, 0.005KV, 0.003KV, 0.002KV, 0.0015KV, 0.001KV, 0.00075KV, 0.0005KV, 0.0003KV, 0.0002KV, 0.00015KV, 0.0001KV, 0.0075KV, 0.005KV, 0.003KV, 0.002KV, 0.0015KV, 0.001KV, 0.00075KV, 0.0005KV, 0.0003KV, 0.0002KV, 0.00015KV, 0.0001KV, 0.0075KV, 0.005KV, 0.003KV, 0.002KV, 0.0015KV, 0.001KV, 0.00075KV, 0.0005KV, 0.0003KV, 0.0002KV, 0.00015KV, 0.0001KV, 0.0075KV, 0.005KV, 0.003KV, 0.002KV, 0.0015KV, 0.001KV, 0.00075KV, 0.0005KV, 0.0003KV, 0.0002KV, 0.00015KV, 0.0001KV, 0.0075KV, 0.005KV, 0.003KV, 0.002KV, 0.0015KV, 0.001KV, 0.00075KV, 0.0005KV, 0.0003KV, 0.0002KV, 0.00015KV, 0.0001KV, 0.0075KV, 0.005KV, 0.003KV, 0.002KV, 0.0015KV, 0.001KV, 0.00075KV, 0.0005KV, 0.0003KV, 0.0002KV, 0.00015KV, 0.0001KV, 0.0075KV, 0.005KV, 0.003KV, 0.002KV, 0.0015KV, 0.001KV, 0.00075KV, 0.0005KV, 0.0003KV, 0.0002KV, 0.00015KV, 0.0001KV, 0.0075KV, 0.005KV, 0.0000000000000000000			

NOTES :  
1. PRESENT  
FUTURE/ SPARE  
SF6/AIR BUSHING  
OHL - OVERHEAD LINE  
SF6/XLPE CABLE TERMINATION  
\* - CB WITH CONTROLLED SWITCHING DEVICE IN ICT & BUS REACTOR BAYS.  
# - CB RATED 4000A IN BUS COUPLER BAYS.

400KV SYSTEM PARAMETERS		
S.N.	PARAMETER	VALUE
1.	NOMINAL VOLTAGE	400KV
2.	HIGHEST SYSTEM VOLTAGE	408KV
3.	RAID FREQUENCY	50Hz
4.	RAID SHORT TIME CURRENT	20KA for 3SEC.
5.	POWER FREQUENCY WITHSTAND VOLTAGE	420KV (RMS)
6.	LIGHTNING IMPULSE WITHSTAND VOLTAGE	1425 KV peak
7.	RAIDING IMPULSE WITHSTAND VOLTAGE	1100KV 1/50 peak
8.	SWITCHING	Effective (10000 mA)
9.	SWITCHING	Effectively reduced

SYSTEM PARAMETERS		220KV
1.	PHASE-TO-NEUTRAL VOLTAGE	220KV
2.	HIGHEST SYSTEM VOLTAGE	254KV
3.	DATE FREQUENCY	50Hz
4.	FASTER SHORT TIME CURRENT	40KA FOR 3SEC
5.	POWER FREQUENCY WITHSTAND VOLTAGE	462KV (RMS)
6.	LINEATING SWITCHEL WITHSTAND VOLTAGE	1100 KV peak
7.	LINEATING SWITCHEL WITHSTAND VOLTAGE	NA
8.	CRATING VOLTAGE	250KV/ (6152 MO)
9.	GROUNDING	Effectively earthed

SYSTEM PARAMETERS		
S.N.		132KV
1.	NOMINAL VOLTAGE	132KV
2.	HIGHEST SETTED VOLTAGE	145KV
3.	RATED FREQUENCY	50Hz
4.	BUSBARS SHORT TIME CURRENT	40KA for 3 sec.
5.	POWER FREQUENCY WITHSTANDING VOLTAGE	275KV (1min)
6.	LIGHTNING IMPULSE WITHSTANDING VOLTAGE	1450 KV peak
7.	SWITCHING IMPULSE WITHSTANDING VOLTAGE	NA
8.	CLEARANCE	200KV (1000 mm)
9.	GROUNDING	EFFECTIVELY EARTHED



LOI No. 1311/BSD-8/126/II/400KV SHAMLI Dated: 14.11.2018

REFERENCE DRG:- TENDER SINGLE LINE DIAGRAM 400/220/132KV GIS S/S

PROJECT: 400/220/132KV GIS SUBSTATION AT SHAMLI (U.P.)

CUSTOMER: UTTAR PRADESH TRANSMISSION CORPORATION LIMITED

DESIGNER: BHARAT HEAVY ELECTRICALS LTD. TRANSMISSION BUSINESS GROUP NOIDA

DATE: 25.10.19

NO. OF SHEETS: 02

REV. DATE

REV.	DATE
01	18.01.19

REV. DATE

REV.	DATE
02	15.03.19

REV. DATE

REV.	DATE
01	18.01.19

REV. DATE

REV.	DATE
01	18.01.19

REV. DATE

REV.	DATE
01	18.01.19

REV. DATE

REV.	DATE
01	18.01.19

REV. DATE

REV.	DATE
02	15.03.19

REV. DATE

REV.	DATE
01	18.01.19

REV. DATE

REV.	DATE
01	18.01.19

REV. DATE

REV.	DATE
01	18.01.19

REV. DATE

REV.	DATE
01	18.01.19

REV. DATE

REV.	DATE
02	15.03.19

REV. DATE

REV.	DATE
01	18.01.19

REV. DATE

REV.	DATE
01	18.01.19

REV. DATE

REV.	DATE
01	18.01.19

REV. DATE

REV.	DATE
01	18.01.19

REV. DATE

REV.	DATE
02	15.03.19

REV. DATE

REV.	DATE
01	18.01.19

REV. DATE

REV.	DATE
01	18.01.19

REV. DATE

REV.	DATE
01	18.01.19

REV. DATE

REV.	DATE
01	18.01.19

REV. DATE

REV.	DATE
02	15.03.19

REV. DATE

REV.	DATE
01	18.01.19

REV. DATE

REV.	DATE
01	18.01.19

REV. DATE

REV.	DATE
01	18.01.19

REV. DATE

REV.	DATE
01	18.01.19

REV. DATE

REV.	DATE
02	15.03.19

REV. DATE

REV.	DATE
01	18.01.19

REV. DATE

REV.	DATE
01	18.01.19

REV. DATE

REV.	DATE
01	18.01.19

REV. DATE

REV.	DATE
01	18.01.19

REV. DATE

REV.	DATE
02	15.03.19

REV. DATE

REV.	DATE
01	18.01.19

REV. DATE

REV.	DATE
01	18.01.19

REV. DATE

REV.	DATE
01	18.01.19

REV. DATE

REV.	DATE
01	18.01.19

REV. DATE

REV.	DATE
02	15.03.19

REV. DATE

REV.	DATE
01	18.01.19

REV. DATE

REV.	DATE
01	18.01.19

REV. DATE

REV.	DATE
01	18.01.19

REV. DATE

REV.	DATE
01	18.01.19

REV. DATE

REV.	DATE
02	15.03.19

REV. DATE

REV.	DATE
01	18.01.19

REV. DATE

REV.	DATE
01	18.01.19

REV. DATE

REV.	DATE
01	18.01.19

REV. DATE

REV.	DATE
01	18.01.19

REV. DATE

REV.	DATE
02	15.03.19

REV. DATE

REV.	DATE
01	18.01.19

REV. DATE

REV.	DATE
01	18.01.19

REV. DATE

REV.	DATE
01	18.01.19

REV. DATE

REV.	DATE
01	18.01.19

REV. DATE

REV.	DATE
02	15.03.19

REV. DATE

REV.	DATE
01	18.01.19

REV. DATE

REV.	DATE
01	18.01.19

REV. DATE

REV.	DATE
01	18.01.19

REV. DATE

REV.	DATE
01	18.01.19

REV. DATE

REV.	DATE
02	15.03.19

REV. DATE

REV.	DATE
01	18.01.19

REV. DATE

REV.	DATE
01	18.01.19

REV. DATE

REV.	DATE
01	18.01.19

REV. DATE

REV.	DATE
01	18.01.19

REV. DATE

REV.	DATE
02	15.03.19

REV. DATE

REV.	DATE
01	18.01.19

REV. DATE

REV.	DATE
01	18.01.19

REV. DATE

REV.	DATE
01	18.01.19

REV. DATE

REV.	DATE
01	18.01.19

REV. DATE

REV.	DATE
02	15.03.19

REV. DATE

REV.	DATE
01	18.01.19

REV. DATE

REV.	DATE
01	18.01.19

REV. DATE

REV.	DATE
01	18.01.19

REV. DATE

REV.	DATE
01	18.01.19

REV. DATE

REV.	DATE
02	15.03.19

REV. DATE

REV.	DATE
01	18.01.19

REV. DATE

REV.	DATE
01	18.01.19

REV. DATE

REV.	DATE
01	18.01.19

REV. DATE

REV.	DATE
01	18.01.19

REV. DATE

REV.	DATE
02	15.03.19

REV. DATE

REV.	DATE
01	18.01.19

REV. DATE

REV.	DATE
01	18.01.19

100-015-906-TB-0-406-510-001

DRG. NO.

6

5

4

3

2

1

400kV GIS CT DETAILS						
Core No.	Current Ratio	Output Burden (VA) at lowest Tap	Minimum KPV (Volts)	Max Ie (mA) at KPV	Maximum Ret (Ohms)	Purpose
1	3000-2000-1000/1 A	-	3000-2000-1000	20-30-60	15-10-5	PS
2	3000-2000-1000/1 A	-	3000-2000-1000	20-30-60	15-10-5	PS
3	3000-2000-1000-500/1 A	20	-	-	-	0.2s, ISF ≤ 5
4	3000-2000-1000-500/1 A	-	6000-4000-2000-1000	20-30-60-120	15-10-5-2.5	PS
5	3000-2000-1000-500/1 A	-	6000-4000-2000-1000	20-30-60-120	15-10-5-2.5	PS

400kV GIS VT DETAILS				
Winding No.	Ratio	Accuracy Class	Rated Burden (VA)	Purpose
1	(400 kV/√3) / (110V/√3)	3P	50	Protection
2	(400 kV/√3) / (110V/√3)	3P	50	Protection
3	(400 kV/√3) / (110V/√3)	0.2	50	Metering

400kV, 8800pF (+10%, -5%) OUTDOOR CVT DETAILS				
Winding No.	Ratio	Accuracy Class	Rated Burden (VA)	Purpose
1	(400 kV/√3) / (110V/√3)	3P	50	Protection
2	(400 kV/√3) / (110V/√3)	3P	50	Protection
3	(400 kV/√3) / (110V/√3)	0.2	50	Metering

220kV GIS CT DETAILS						
Core No.	Current Ratio	Output Burden (VA) at lowest Tap	Minimum KPV (Volts)	Max Ie (mA) at KPV	Maximum Ret (Ohms)	Purpose
1	2000-1600-1000-500/1 A	-	2000-1600-1000-500	30-37.5-60-120	10-8.5-2.5	PS
2	2000-1600-1000-500/1 A	-	2000-1600-1000-500	30-37.5-60-120	10-8.5-2.5	PS
3	2000-1600-1000-500/1 A	20	-	-	-	0.2s, ISF ≤ 5
4	2000-1600-1000-500/1 A	-	2000-1600-1000-500	30-37.5-60-120	10-8.5-2.5	PS
5	2000-1600-1000-500/1 A	-	2000-1600-1000-500	30-37.5-60-120	10-8.5-2.5	PS

220kV GIS VT DETAILS				
Winding No.	Ratio	Accuracy Class	Rated Burden (VA)	Purpose
1	(220 kV/√3) / (110V/√3)	3P	50	Protection
2	(220 kV/√3) / (110V/√3)	3P	50	Protection
3	(220 kV/√3) / (110V/√3)	0.2	50	Metering

220kV, 4400pF (+10%, -5%) OUTDOOR CVT DETAILS				
Winding No.	Ratio	Accuracy Class	Rated Burden (VA)	Purpose
1	(220 kV/√3) / (110V/√3)	3P	50	Protection
2	(220 kV/√3) / (110V/√3)	3P	50	Protection
3	(220 kV/√3) / (110V/√3)	0.2	50	Metering

132kV GIS VT DETAILS				
Winding No.	Ratio	Accuracy Class	Rated Burden (VA)	Purpose
1	(132 kV/√3) / (110V/√3)	3P	50	Protection
2	(132 kV/√3) / (110V/√3)	3P	50	Protection
3	(132 kV/√3) / (110V/√3)	0.2	50	Metering

500 MVA, 400/220/132kV ICT BUSHING CT DETAILS						
400kV SIDE BUSHING CT						
Core No.	Current Ratio	Output Burden (VA) at lowest Tap	Minimum KPV (Volts)	Max Ie (mA) at KPV	Maximum Ret (Ohms)	Purpose
1	1600/1 A	-	1600	25	4	PS
2	1000/1 A	30	-	-	-	0.2, ISF ≤ 5

220kV SIDE BUSHING CT						
Core No.	Current Ratio	Output Burden (VA) at lowest Tap	Minimum KPV (Volts)	Max Ie (mA) at KPV	Maximum Ret (Ohms)	Purpose
1	1600/1 A	-	1600	25	4	PS
2	1600/1 A	30	-	-	-	0.2, ISF ≤ 5

NEUTRAL SIDE BUSHING CT						
Core No.	Current Ratio	Output Burden (VA) at lowest Tap	Minimum KPV (Volts)	Max Ie (mA) at KPV	Maximum Ret (Ohms)	Purpose
1	1600/1 A	-	1600	25	4	PS

125MVAR, 400kV SHUNT REACTOR BUSHING CT DETAILS						
400kV SHUNT REACTOR (LINE SIDE)						
Core No.	Current Ratio	Output Burden (VA) at lowest Tap	Minimum KPV (Volts)	Max Ie (mA) at KPV/2	Maximum Ret (Ohms)	Purpose
1	200/1 A	-	200	100	1	PS
2	200/1 A	-	200	100	1	PS
3	200/1 A	15	-	-	-	PS

400kV SHUNT REACTOR (NEUTRAL SIDE)						
Core No.	Current Ratio	Output Burden (VA) at lowest Tap	Minimum KPV (Volts)	Max Ie (mA) at KPV/2	Maximum Ret (Ohms)	Purpose
1	200/1 A	-	200	100	1	PS
2	200/1 A	-	200	100	1	PS
3	500/1 A	10	-	-	-	0.2, ISF ≤ 5
4	172.22-2.0-1.8-1.6 A	10	-	-	-	5

200 MVA, 220/132/11 kV ICT BUSHING CT DETAILS						
220kV SIDE BUSHING CT						
Core No.	Current Ratio	Output Burden (VA) at lowest Tap	Minimum KPV (Volts)	Max Ie (mA) at KPV/2	Maximum Ret (Ohms)	Purpose
1	1000/1 A	-	1000	40	5	PS

132kV SIDE BUSHING CT						
Core No.	Current Ratio	Output Burden (VA) at lowest Tap	Minimum KPV (Volts)	Max Ie (mA) at KPV/2	Maximum Ret (Ohms)	Purpose
1	1000/1 A	-	1000	40	5	PS

NEUTRAL SIDE BUSHING CT						
Core No.	Current Ratio	Output Burden (VA) at lowest Tap	Minimum KPV (Volts)	Max Ie (mA) at KPV/2	Maximum Ret (Ohms)	Purpose
1	1000/1 A	-	1000	40	5	PS

11kV TERTIARY BUSHING CT						
Core No.	Current Ratio	Output Burden (VA) at lowest Tap	Minimum KPV (Volts)	Max Ie (mA) at KPV/4	Maximum Ret (Ohms)	Purpose
1	2500/1 A	-	600	30	5	PS
2	2500/1 A	-	300	40	5	PS
3	2500/1 A	30	-	-	5	1

132kV GIS CT DETAILS (BUS COUPLER BAY)						
Core No.	Current Ratio	Output Burden (VA) at lowest Tap	Minimum KPV (Volts)	Max Ie (mA) at KPV	Maximum Ret (Ohms)	Purpose
1	1600-800-400/1 A	-	1600-800-400	25-50-100	8-4-2	PS
2	1600-800-400/1 A	-	1600-800-400	25-50-100	8-4-2	PS
3	1600-800-400/1 A	20	-	-	-	0.2s, ISF ≤ 5
4	1600-800-400/1 A	-	1600-800-400	25-50-100	8-4-2	PS
5	1600-800-400/1 A	-	1600-800-400	25-50-100	8-4-2	PS

132kV GIS CT DETAILS (LINE & TRF BAY)						
Core No.	Current Ratio	Output Burden (VA) at lowest Tap	Minimum KPV (Volts)	Max Ie (mA) at KPV	Maximum Ret (Ohms)	Purpose
1	1000-500-250/1 A	-	1000-500-250	25-50-100	5-2.5-1.25	PS
2	1000-500-250/1 A	-	1000-500-250	25-50-100	5-2.5-1.25	PS
3	1000-500-250/1 A	20	-	-	-	0.2s, ISF ≤ 5
4	1000-500-250/1 A	-	1000-500-250	25-50-100	5-2.5-1.25	PS
5	1000-500-250/1 A	-	1000-500-250	25-50-100	5-2.5-1.25	PS

## 50MVAR, 400kV SHUNT REACTOR BUSHING CT DETAILS

400kV SHUNT REACTOR (LINE SIDE)						
Core No.	Current Ratio	Output Burden (VA) at lowest Tap	Minimum KPV (Volts)	Max Ie (mA) at KPV/2	Maximum Ret (Ohms)	Purpose
1	200/1 A	-	200	100	1	PS
2	200/1 A	-	200	100	1	PS
3	200/1 A	15	-	-	-	SP20
4	500/1 A	10	-	-	-	0.2, ISF ≤ 5

400kV SHUNT REACTOR (NEUTRAL SIDE)						
Core No.	Current Ratio	Output Burden (VA) at lowest Tap	Minimum KPV (Volts)	Max Ie (mA) at KPV/2	Maximum Ret (Ohms)	Purpose
1	2000-1000-500/1 A	-	1000-500-250	30-15-8	10-5-2.5	PS
2	2000-1000-500/1 A	-	1000-500-250	30-15-8	10-5-2.5	PS
3	200/1 A	-	200	100	1	PS
4	60/2.3-1-9-1.5	10	-	-	-	5

## 50MVAR, 400kV SHUNT REACTOR NGR BUSHING CT DETAILS

400kV NGR (LINE SIDE)						
Core No.	Current Ratio	Output Burden (VA) at lowest Tap	Minimum KPV (Volts)	Max Ie (mA) at KPV/2	Maximum Ret (Ohms)	Purpose
1	200/1 A	-	200	100	1	PS

400kV NGR (NEUTRAL SIDE)						
Core No.	Current Ratio	Output Burden (VA) at lowest Tap	Minimum KPV (Volts)	Max Ie (mA) at KPV/2	Maximum Ret (Ohms)	Purpose
3	200/1 A	-	200	100	1	PS

Approved for Revision-2 only

Office of The Superintending Engineer  
Electricity 765/400KV Substation Design Circle-II  
UP Power Transmission Corporation Limited  
11th Floor, Shakti Bhawan Extn. Lucknow

APPROVED

AE EE SE

LOI No. 1311/ESD-8/126/III/400kV SHAMLI Dated: 14.11.2018			
REFERENCE DRG.: TENDER SINGLE LINE DIAGRAM 400/220/132kV GIS S/S			
PROJECT: 400/220/132kV GIS SUBSTATION AT SHAMLI (U.P.)			
CUSTOMER: UTTAR PRADESH TRANSMISSION CORPORATION LIMITED			
BHARAT HEAVY ELECTRICALS LTD. TRANSMISSION BUSINESS GROUP NOIDA			
DEPT. TBG CODE	UNTO. DIMS. GR. 9/M/F	SCALE N.T.S	WEIGHT (KG) N.A.
TITLE SINGLE LINE DIAGRAM 400/220/132kV GIS SUB STATION	CARD CODE NA	DRG. NO. TB-0-406-510-001	REV. 02
SHT. No 02		NO. OF SHT. --	

REV.	DATE	ALTERED	REV.	DATE	ALTERED	SY	REV.	DATE	ALTERED	SY	
		CHD/APPD			02	15.03.19		CHD/APPD	MSP/SKS	01	18.01.19
ZONE			ZONE				ZONE				
1. EARTHING SWITCHES IN 400KV BUS VT, 125MVAR BUS REACTOR, 500MVA ICT O/G FEEDER ADDED AS PER CONTRACT.			2. EARTHING SWITCHES IN 500MVA ICT I/C, 220KV BUS VT, 500MVA ICT O/G FEEDER ADDED AS PER CONTRACT.			3. EARTHING SWITCHES IN 200MVA ICT I/C, 132KV BUS VT, ADDED AS PER CONTRACT.			4. 50MVAR LINE REACTOR CT PARAMETERS REVISED AS PER BHEL BHOPAL INPUT.		
1. HIGH SPEED SWITCHES IN 400KV BUS VT, 125MVAR BUS REACTOR, 500MVA ICT O/G FEEDER REMOVED AS PER CONTRACT.			2. HIGH SPEED SWITCHES IN 500MVA ICT I/C, 220KV BUS VT, 500MVA ICT O/G FEEDER REMOVED AS PER CONTRACT.			3. HIGH SPEED SWITCHES IN 200MVA ICT I/C, 132KV BUS VT, REMOVED AS PER CONTRACT.			4. 125MVAR BUS REACTOR CT PARAMETERS REVISED AS PER BHEL BHOPAL INPUT.		

8

7

6

5

4

3

2

1

SIZE-A0